

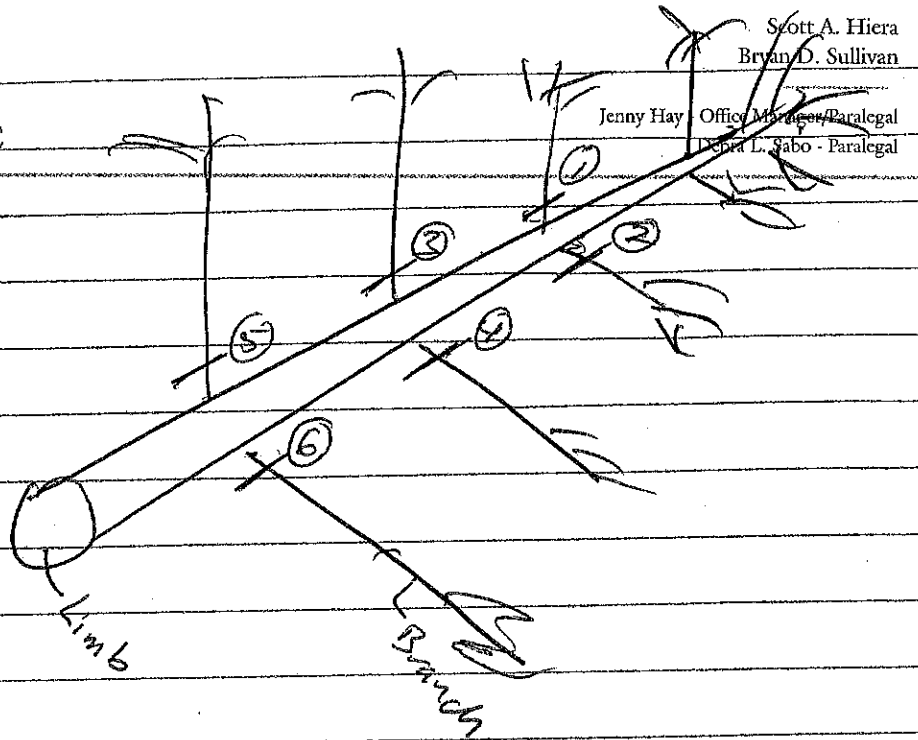


LAW OFFICE OF
SCOTT A. HIERA, LLC

Scott A. Hiera
Bryan D. Sullivan

Jenny Hay - Office Manager/Paralegal
Debra L. Sabo - Paralegal

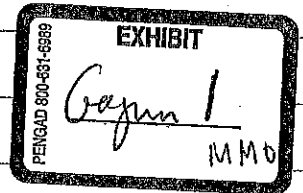
TOP



Base

Kimb

Branch



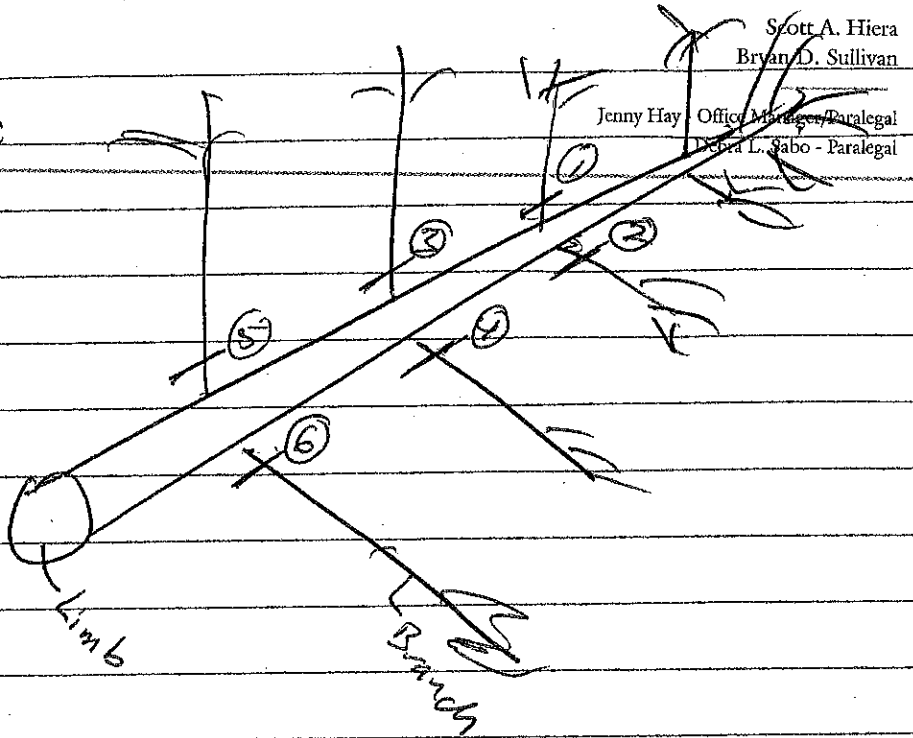


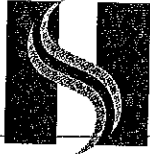
LAW OFFICE OF
SCOTT A. HIERA, LLC

Scott A. Hiera
Bryan D. Sullivan

Jenny Hay - Office Manager/Paralegal
Debra L. Sabo - Paralegal

top





LAW OFFICE OF
SCOTT A. HIERA, LLC

Scott A. Hieria
Bryan D. Sullivan

Jenny Hay Office Manager/Paralegal
Debra L. Sabo - Paralegal

TOP

